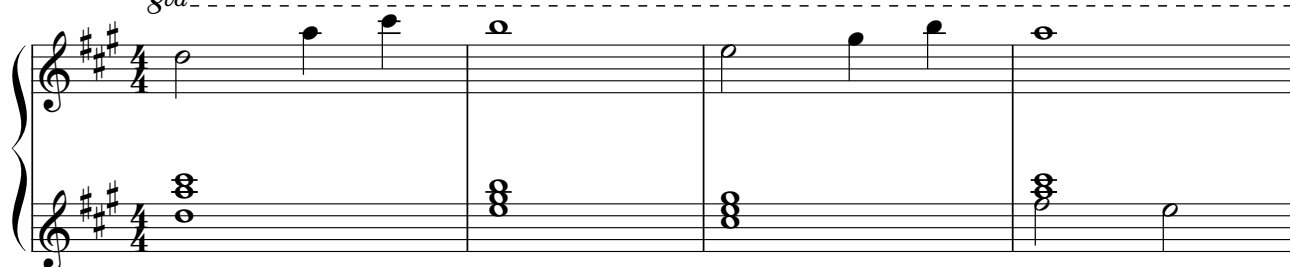


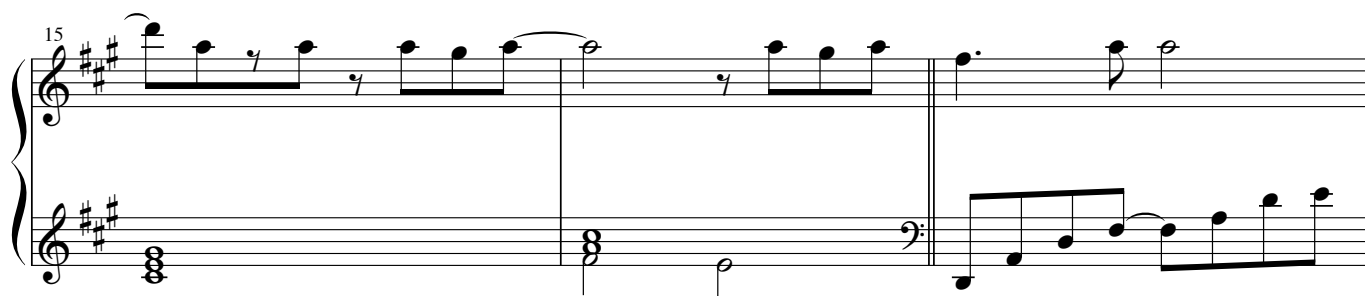
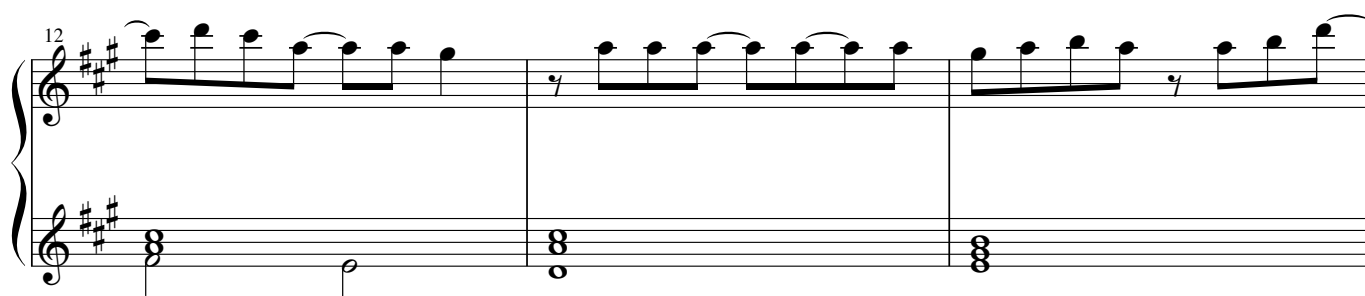
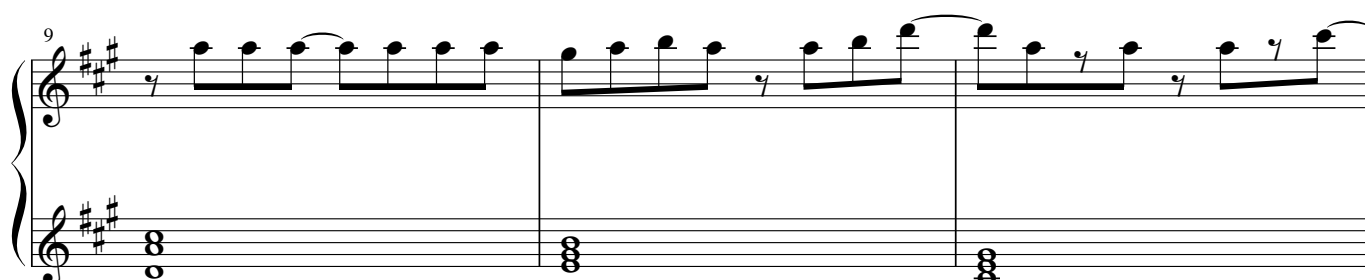
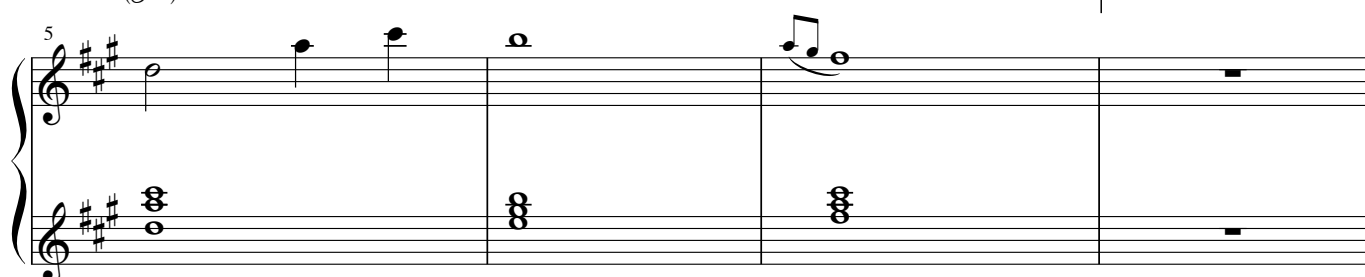
みくみくにしてあげる -Piano Arrange-

Original Song: ika('A')
Piano Transcription: じゅり

Freely
gva



(*gva*)



18

gva

21

24

R. H. 変更前

27

30

33

36

39

gva-----

43

(gva)-----

46

(gva)-----

R. H. 变更前

50

Measures 50-52. Treble clef: Chords (F#4, C#5) and eighth notes (G#4, A4, B4). Bass clef: Eighth-note accompaniment (C3, D3, E3, F#3, G3, A3, B3, C4).

53

Measures 53-55. Treble clef: Chords (F#4, C#5) and eighth notes (G#4, A4, B4). Bass clef: Eighth-note accompaniment (C3, D3, E3, F#3, G3, A3, B3, C4).

56

Measures 56-58. Treble clef: Chords (F#4, C#5) and eighth notes (G#4, A4, B4). Bass clef: Eighth-note accompaniment (C3, D3, E3, F#3, G3, A3, B3, C4).

59

Measures 59-61. Treble clef: Chords (F#4, C#5) and eighth notes (G#4, A4, B4). Bass clef: Eighth-note accompaniment (C3, D3, E3, F#3, G3, A3, B3, C4).

62

rit.

Measures 62-64. Treble clef: Chords (F#4, C#5) and eighth notes (G#4, A4, B4). Bass clef: Eighth-note accompaniment (C3, D3, E3, F#3, G3, A3, B3, C4). Measure 64 includes a *rit.* marking.

65 *a tempo*

65 66 67

68

68 69 70

71

71 72 73

74

74 75 76